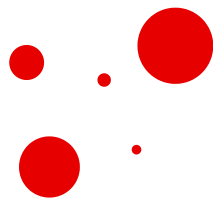




# SOU

# *Lingo*



**SO** | Southern OREGON  
**U** | UNIVERSITY

**DEAN OF STUDENTS**



@soustudentlife  
@sou.student.support

# ***Abbreviations***

## **AC - Area Coordinator**

The AC supervises and maintains a comprehensive, inclusive residential living program for students living in University Housing.

## **ASSOU - Associated Students of Southern Oregon University**

Advocates for issues that matter to students on campus, in the community, in the state of Oregon, and nationally. ASSOU is committed to improving students' lives through social organizing, legislative advocacy, and voter registration.

## **CORE - Community of Recovery in Education**

Supports and promotes the academic success, recovery, and well-being of SOU students recovering from addiction by providing an authentic student-centered community and robust recovery support services and programming.

## **CPS - Campus Public Safety**

Enforces State laws, City ordinances, and University policies when violations compromise the safety and the livability of the campus community through a 24-hour seven day per week presence across campus.

## **DOS - Dean of Students**

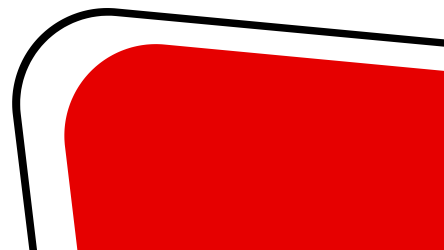
Supports students in their educational and personal goals by providing connections to resources, helping to resolve conflicts and complaints, and offering various programs and services: Care Coordination, Social Justice and Equity Center, Student Life, Career Connections, and YOU@SOU.

## **DR - Disability Resources**

Offers resources for accommodations and assistance to students if they have a disability.

## **EPIC - Event Planning Involvement Committee**

The Event Planning Involvement Committee (EPIC) is the student programming board. It enhances the campus community by providing entertaining, educational, and socially engaging opportunities.



# ***Abbreviations***

## **FAFSA - Free Application for Federal Student Aid**

This form determines your financial aid from the government and most colleges by collecting personal and financial information from students and parents.

## **FERPA - Family Educational Rights and Privacy Act**

A federal law that protects the privacy of student educational records and grants access to those records by parents.

## **FWS - Federal Work Study program**

A program that provides jobs on campus and at nonprofit agencies in the community where earnings from these jobs enable students to help pay for educational expenses.

## **GSJ - Gender & Sexuality Justice**

Direct and confidential resources provided through SOU to support and empower queer, trans, femme folks, women, and survivors.

## **IP - Office of International Programs**

SOU's resource for international educational activities and supports initiatives to internationalize the university.

## **MySSP - My Student Support Program at SOU**

MySSP connects students with free, confidential mental health and wellbeing support conveniently available 24/7. Common concerns that can be addressed include being successful at school, relationships with friends and family, stress, worry, sadness, loneliness, and much more, frustration or uncertainty related to studies or post-graduation plans, and creating a balance between personal and academic priorities.

## **NSO - New Student Orientation programs**

Consists of academic sessions, social activities, and workshops where new students learn the best practices for educational and personal success at the start of their time at SOU. All new students are expected to participate in New Student Orientation.

# ***Abbreviations***

## **OCA - Oregon Center for the Arts**

The Oregon Center for the Arts houses instrumental and vocal programs and SOU's theater programs. The OCA building has classrooms, individual practice rooms, and the SOU recital hall.

## **OEDI - Office for Equity Diversity and Inclusion**

Promotes an inclusive process to ensure equitable access to opportunities, benefits, and resources for all faculty, administrators, students, and community members.

## **PEAK - Professional Experience Achievement and Knowledge jobs**

A program that provides student employment opportunities geared towards professional and academic development. PEAK jobs are typically eight hours per week. They are open to undergraduate and graduate students who are enrolled at least half-time in SOU classes

## **RA - Resident Assistant**

University housing leaders who act as a facilitator for the residence hall community and enhance the social, educational, and cultural development of each of their residents by planning and hosting events within the halls. The RA works to help students through challenges and serves on a nightly duty rotation to assist students with concerns and keep the residence halls safe and secure.

## **RJ - Racial Justice**

Advocates for Black, Indigenous, and/or People of Color students, faculty, and staff at SOU.

## **RM - Resident Manager**

Resident managers are responsible for caring for Student Apartments and Family Housing common spaces, planning engaging events for tenants, and communicating with monthly newsletters.

## **RSS - Raider Student Services**

Raider Student Services is a centralized location that houses the Office of Financial Aid and Scholarships, the Office of the University Registrar, and the Bursar's Office (Student Financial Accounts).



# ***Abbreviations***



## **SAFH - Student Apartments and Family Housing**

Student Apartments Family Housing is off-campus housing offered to upper-level students, faculty, and staff. Located only two blocks from campus, SAFH provides a variety of apartment styles.

## **SCCR - Student Conduct and Conflict Resolution**

Resources provided by the Dean of Students for students to become familiar with community standards and develop personal accountability. These are found under the Community Standards of the DOS website.

## **SCH - Student Credit Hours**

Student credit hours refer to the minimum number of credits a student must be enrolled in to be considered a full-time student. This is usually a minimum of 12 credits per term and a maximum of 21 credits per term.

## **SHWC - Student Health and Wellness Center**

Offers primary medical care, mental health care, and preventative services to enrolled SOU students.

## **SJEC - The Social Justice and Equity Center**

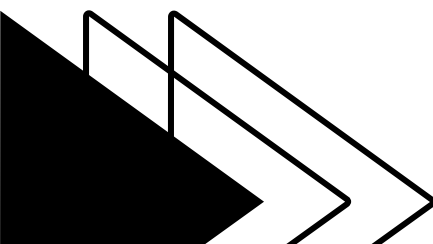
Provides advocacy, education, community, and resources centering the needs of Black students, Indigenous students, students of color, queer and trans students, women and femmes, Veterans, and military families.

## **SOSA - Southern Online Scholarship Application**

The Southern Online Scholarship Application is an online portal for students to access and complete SOU-specific scholarship applications.

## **SRC - Student Recreation Center**

An on-campus recreation facility that features a variety of workout spaces and top-of-the-line exercise equipment. It provides spaces and programs for students, faculty, and staff members to connect with the community and experience peak wellness.



# ***Abbreviations***

## **SSC - Student Success Coordinator**

Provides innovative and holistic solutions for students and serves as a key resource for helping students navigate university policies and procedures. Student Success Coordinators assist students with students transitioning to the university, aligning students' career goals with academic majors, utilizing academic plans to promote a path to graduation, and providing opportunities to enhance career exploration and preparation.

## **SSS - Student Success at Southern/TRIO Student Support Services**

Success at Southern/TRIO Student Support Services (SSS) program is committed to increasing eligible participants' college retention, academic standing, and graduation rates. By providing various services to meet students' needs, we assist eligible participants in clarifying their goals, succeeding academically in their chosen program of study, and graduating with a bachelor's degree on time.

## **SU - Stevenson Union**

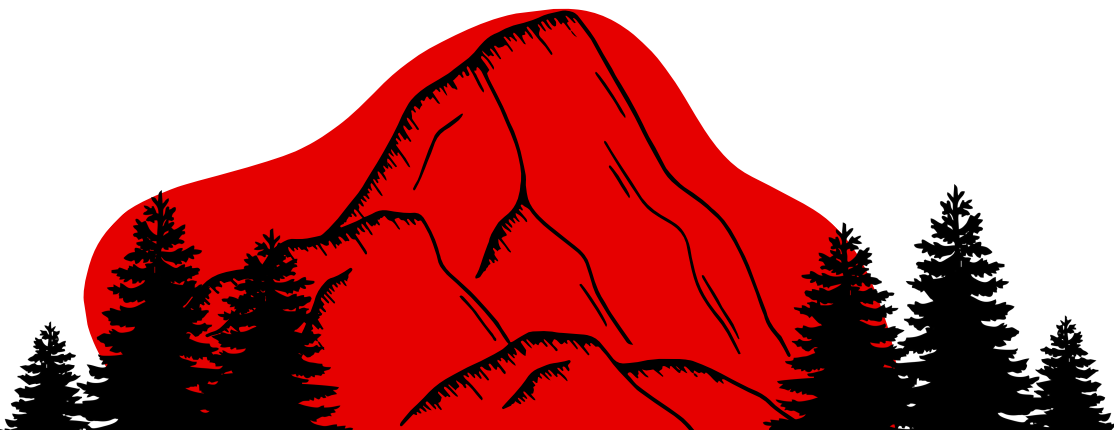
A community hub at SOU and a multipurpose center for student life. It provides educational, cultural, social, recreational, and leadership programs/services to enhance students' academic experience and foster campus pride.

## **USEM - University Seminar**

A required course for incoming first-year students designed to be taken during their first year at SOU. Covers A-C stands for students' degrees.

## **VA - Veterans Administration**

Assists Veterans and Military Families, honoring their service, supporting their academic journey, and building a community of support. Resources such as programs, job opportunities, scholarships, and a dedicated space for homework are available through the Social Justice and Equity Center



# ***Terminology***

## **Academic Calendar**

A calendar with information on the school's important dates. It includes university closures, the start and end of terms, breaks, and other vital details.

## **Academic Hold**

Holds are placed on student accounts for various reasons. These include advising holds, tuition holds, or new student advising.

## **Area Coordinator**

A full-time professional staff member responsible for the operations of a housing hall.

## **Banner Self Service**

This is a list on the InsideSOU website, within the Online services blue box, that has essential student links such as student profile, billing account, final grades, financial aid, pay you bill, registration and planning, and employee dashboard.

## **Cares Note**

Submit an anonymous note of concern on behalf of an SOU student. Some examples of reported concerns include mental and emotional health, academic performance, personal illness or injury, alcohol and other drug use, and academic integrity.

## **Care Coordinators**

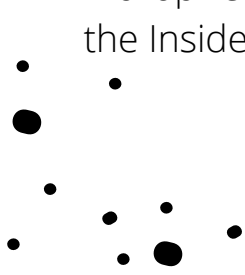
Care Coordinators assist students with complicated issues/concerns and work with them directly to provide connections to services, SOU offices, and resources both on campus and in the community.

## **DegreeWorks**

DegreeWorks is an online resource designed to help students organize past, current, and future courses and track uncompleted requirements for their degree(s).

## **Drop**

A drop refers to unenrolling in a class through the registration and planning bullet on the InsideSOU webpage.



# ***Terminology***



## **Handshake**

All registered SOU students can use their student email to sign up for Handshake. Handshake allows students to search for on-campus employment opportunities and local businesses hiring.

## **Hannon Library**

The main library on campus. Students can find research services, textbook reserves, tutoring services, and study rooms available for reservation.

## **Inside SOU**

The go-to website for students and faculty to find information.

## **Madrone Hall**

Madrone Hall is an apartment-suite design with single rooms in a 4-person apartment suite. Suites come with a full kitchen. This is a returning and transfer student community.

## **McLoughlin Hall**

McLoughlin Hall is part of Raider Village and features a suite design with double, single, super-single, and studio-single rooms available. This is primarily a returning & transfer student community, but open to all students.

## **McNair Program**

The McNair Scholars Program prepares undergraduate students from underrepresented segments of society to succeed in graduate programs and develop scholars capable of growing in intensive research doctoral study, thereby increasing the attainment of research-intensive doctoral degrees awarded to students from historically underrepresented groups.

## **Meal Swipes**

Part of a meal plan that allows entry into The Hawk Dining Hall or purchases of a meal at Elmo's Grill.





# ***Terminology***

## **Moodle**

A link on the inside SOU page where students can find their classes, homework, grades, and more.

## **Navigate**

Navigate Student is an app that students can use to set up meetings with advisors, set up study groups, and find information on all on-campus resources.

## **Online Services**

An area on the right side of the InsideSOU website with essential student links. A few include DegreeWorks, the SOU bookstore, registration, and more.

## **Raider Cash**

Raider Cash is a credit on your account similar to a gift card. By swiping your card, you can spend Raider Cash at The Landing or Einstein Bros Bagels. You can also use Raider Cash at The Hawk to pay for your meal instead of using a meal swipe.

## **RaiderJOBS**

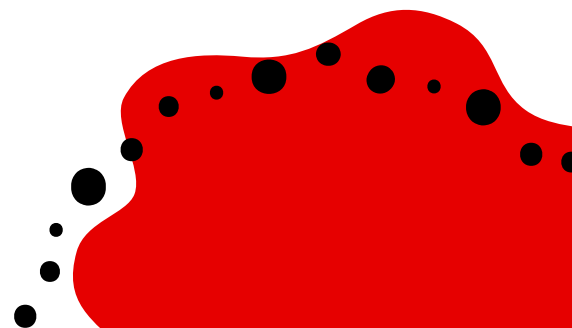
SOU's Handshake portal allows students to apply to the position(s) of interest by uploading their resume, cover letter, and other required documents. This resource helps students find jobs on campus and in the community.

## **Raider Ready**

Raider Ready programs help prepare and connect incoming first-year students. These include an online orientation, a virtual registration appointment, and campus connection events.

## **Raider Village**

Raider Village houses Shasta Hall and McLoughlin Hall, with ample green space in the center that serves as a place for student life events.



# ***Terminology***

## **Registration**

Registration is the process of signing up for classes. Each student registers on a specific date based on their current credit hours. Students should enroll as soon as their registration time window has begun.

## **Shasta Hall**

Shasta Hall is part of Raider Village and features a semi-suite design with both single and double rooms available. This is primarily a first-year community but open to all students.

## **SOU Alert**

SOU's emergency notification system that alerts students and staff of large emergencies.

## **SOU News**

SOU's dedicated site for students to access fresh news and information about the campus community.

## **SOU One Card**

SOU One Card acts as a student's ID card and can serve as a form of payment with a meal plan.

## **SOU Presence**

Presence is a resource to help students engage, connect, and lead by joining clubs and experiences. Students can explore organizations and opportunities through the online student portal.

## **Student Food Pantry**

The SOU food pantry is a resource that provides free food for enrolled students. The pantry can be found in the Stevenson Union in room 310.

## **The Hawk**

The main dining hall is located on the lower level campus next to the residence halls.

# ***Terminology***

## **Week of Welcome**

The first week of each academic year contains events and activities for incoming students to help them connect with their community.

## **Withdrawal**

Students in good standing are entitled to honorable dismissal at any time through Monday of the last week of classes. Students withdrawing after the fourth week and through Monday of the last week of classes receive a WD (Withdrawn) in each of their withdrawn courses. Students who want to withdraw may do so in person or via SISWeb. The effective withdrawal date is when the form is submitted to the Enrollment Services Center. Refunds are prorated accordingly.



# ***Resources***

Financial Aid

<https://sou.edu/financial-aid/>

New Student Orientation

<https://studentlife.sou.edu/new-student-programs/>

Health Center

<https://health.sou.edu/>

Parking Services

<https://inside.sou.edu/parking/index.html>

InsideSOU

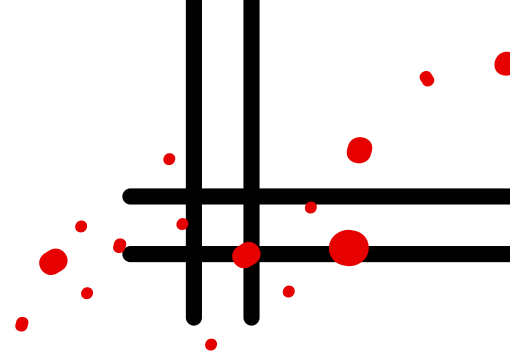
<https://inside.sou.edu/>

Housing

<https://sou.edu/housing/>

Dean of Students

<https://dos.sou.edu/>





# ***Community Standards***

*We are a community of scholars dedicated to personal and academic excellence. Being part of the SOU community obligates each member to observe the following principles:*

- **Mutual respect**
- **Personal and academic integrity**
- **Civil discourse**
- **Responsible decision making**





**SO** | **Southern OREGON**  
**U** | **UNIVERSITY**

---

**DEAN OF STUDENTS**

